

ApeosPort

C7600

C6500

C5500

FUJI XEROX 

ApeosPort-III C7600 / C6500 / C5500 Digital Colour Multifunction Device

Production performance with colour
impact for your office



ApeosPort-III C7600 / C6500 / C5500 Multifunction Devices

Print. Copy. Scan. Fax. The ApeosPort-III C7600 / C6500 / C5500 multifunction devices are equipped to handle the output volumes needed for document intensive office environments. Add to that unrivaled, high impact colour, and you have the versatility to give your business a clear, competitive edge.

Fuji Xerox's Apeos iiX (Apeos Internet Integration based on XML and SOAP) is a software platform inside the ApeosPort-III C7600 / C6500 / C5500 multifunction devices that can be customised to meet your specific functional requirements¹. By connecting several business critical applications, you can increase staff productivity, as well as improve business and environmental efficiencies.

¹ Optional. Fuji Xerox's development team provides a range of customisation services to tailor applications to address unique needs.

Features at a glance

- Print, copy, scan and optional faxing
- Print up to 75 ppm black and white, 60 ppm colour
- True 2,400 x 2,400 dpi print resolution
- Intuitive, easy-to-use, large colour user interface
- Security features for demanding office environments
- High impact colour with built-in control and accounting features



ApeosPort-III C7600 with optional High Capacity Feeder and C-Finisher with Booklet Maker

Versatility from start to finish

Add features and options to the ApeosPort-III C7600 / C6500 / C5500 to make it the perfect fit for your office.

Large paper capacity. For high-volume workgroups, the 3,260 sheet paper capacity can be boosted to 5,260 sheets with the optional High Capacity Feeder. ApeosPort-III C7600 / C6500 / C5500 is available with the following four paper trays as standard:

- Two fully adjustable paper trays (A5 to A3)
- Two high capacity paper trays (A4 only)

Flexible document handling.

The single pass DADF option allows both sides of a document (black and white only) to be scanned simultaneously at up to an incredible 100 pages per minute for exceptional productivity.

Professional finishing options.

Create professional presentations and attractive manuals or proposals. This range of optional finishers gives you efficient, finish-on-demand versatility. These high performance finishers feature stapling, hole punching, saddle stitching and many other finishing tasks.

Large, colour user interface can be customised to feature only the most frequently used features. For easier document viewing, colour previews of scanned documents can be shown on the display as thumbnail images².

²Optional.



- 1 Fully customisable colour touch screen layout
- 2 Convenient access to advanced functions such as copying, network scanning, faxing and email
- 3 Integration with web-based applications
- 4 Assign frequently-used features to the custom hard buttons

Configuration Options



1
High Capacity Feeder
2,000 Sheets

2
Base Unit
with Large Colour
User Interface

3
Simple / Offset
Catch Tray

OR

4
C-Finisher
Stacker / Stapler /
Hole Puncher

OR

5
C-Finisher with
Booklet Maker
Stacker / Stapler /
Hole Puncher /
Booklet Maker

6
D-Finisher with
Booklet Maker
Stacker / Stapler / Hole
Puncher / Interposer /
Booklet Maker with
optional Folder Unit

From paper to digital to anywhere

The ApeosPort-III C7600 / C6500 / C5500 devices turn your paper documents into intelligent digital files and opens the door to more possibilities – more ways to organise, store and share your information than ever before.

Cutting-edge scanning functionality. Increase efficiency with Scan to Email for quick document distribution to multiple email addresses, Scan to Folder to store on the device and Scan to Home to store on a personal directory. Plus Scan to Network Folder or FTP.

Increase efficiency
with Scan to Email
for quick document
distribution to
multiple email
addresses



Scan to Searchable PDF format for easy archiving, organising, searching and sharing. Creating a text searchable PDF file is as easy as choosing a file format when programming a scan job – it can even be designated the default format¹.

¹ Optional Searchable PDF Kit is required.

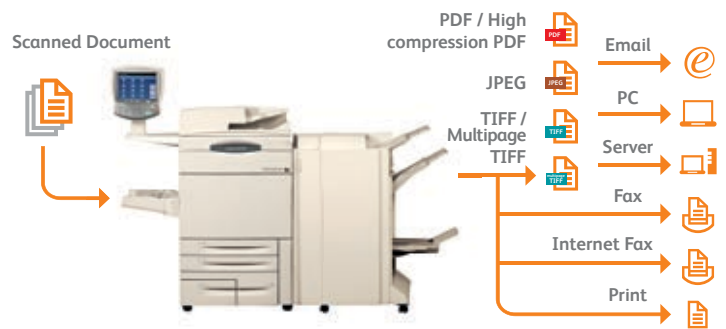
Store frequently printed documents. Increase employee efficiency with robust scanning features that store frequently used forms and documents in the device's hard drive for subsequent reprinting.



Scan to Home. As easy as copying, documents can be scanned directly to a pre-designated folder on a registered PC for immediate use or archived for later retrieval².

² External authentication is required.

Automatic file distribution. This feature lets you route documents to multiple destinations – email, folders, fax or print – from a single scan, using a pre-set workflow.



Light directory access protocol (LDAP) takes the time and effort out of scanning a document to email by providing users with search access to the email address of an intended recipient from the address book on the server.

Streamline network traffic and create greater operational efficiency by sending information via a URL link. Send a URL link that brings you directly to a file's location rather than the document itself.

Easily scan single files into one merged document or split one large document into single files.



Performance to increase productivity

Why crowd the office with multiple devices when one can meet all your needs? The ApeosPort-III C7600 / C6500 / C5500 multifunction devices have the features you use everyday and the power to be true multitaskers.

Super-fast copy and print speeds of up to 75 ppm in black and white and 60 ppm in colour, for a quick turnaround.

Nothing gets noticed like colour. 2,400 x 2,400 dpi output print resolution gives your documents optimum clarity and impact.

Automatic colour sensing technology. Using built-in image sensing technology, the ApeosPort-III C7600 / C6500 / C5500 automatically recognises when colour is used and will capture this information in the device meters.

Run at gigabit speeds. The ApeosPort controller supports optional Gigabit Ethernet connections.

USB direct printing is possible with the optional Media Print Kit. It can save time for users by printing PDF and TIFF files directly from a USB flash memory drive or JPEG files from a camera media¹ without having to boot up a PC. A perfect solution when the need to print is urgent.

¹ JPEG files retrieved directly from the DCIM folder can be printed.



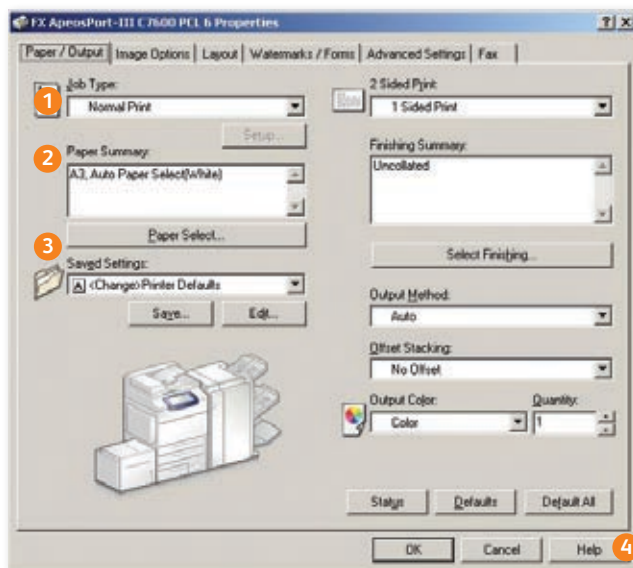
Breakthrough print driver platform that can significantly reduce costs and increase the efficiencies of printer management and support. A Fuji Xerox common print driver provides users and network administrators with a single driver interface that communicates with multiple Fuji Xerox devices².

² Available for specific models only.

WHQL certified PCL and PostScript print drivers provide a consistent, easy-to-use interface for end-users that can greatly simplify your printing operations.

Save time by storing the settings of frequently printed documents as favourites in your print driver. Settings include paper sizes, covers, duplexing, finishing and more.

Advanced copy and print features. Plenty of support for specialised print applications, such as Annotation, Delayed Print and Security Watermark right from the print driver.



- 1 Drop down menu for secure print, fax, save to mailbox and more
- 2 Paper selection summary window
- 3 Favourite print settings
- 4 Help function for feature descriptions and driver assistance

Extensive fax capabilities

Network Server Fax, Internet Fax enablement (to avoid long distance charges) and Walk-up Fax eliminate the need for a dedicated fax machine.

Electronic fax. If there is a concern about faxes getting lost in piles of other documents, this feature eliminates paper wastage and provides peace of mind. It will route incoming faxes to a nominated email address, folder or network connected PC for retrieval and further distribution on demand.



Capture and store undelivered faxes sent directly from the device. The fax number can be edited at the user interface and re-sent if required, without rescanning the document(s).

Block unwanted (junk) fax numbers. This allows you to block specified fax numbers, so it does not print faxes received from those numbers in the future.

Restrict users from sending faxes to numbers not listed in your address book. This security feature will help protect the leakage of confidential information and reduce costs by preventing users from using the fax function for non-business related purposes.



Improve your business communications with the cost-effective G3 fax option

Cutting-edge Internet and security standards

The ApeosPort-III C7600 / C6500 / C5500 multifunction devices incorporate some of the strongest security features in the industry, helping you to ensure that your document production workflow is well protected.



Latest in Internet standards and protocols

ApeosPort-III C7600 / C6500 / C5500 multifunction devices

support the new IPv6 standard, which opens up additional IP addressing opportunities across the Internet and inside enterprise firewalls. IPv6 provides additional network security, better network routing and configuration, and improved support for high volume printing and larger print jobs.

IPSec. IPv6 support includes full enablement of the IPSec standard, one of the strongest and most versatile security standards.

802.1x Port Based Network

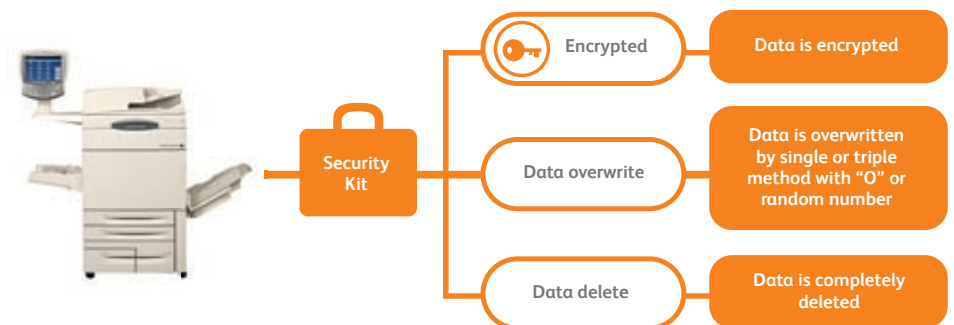
Access Control ensures that devices that are connected to the network have the proper authorisation.

Secure Print helps prevent unauthorised viewers from seeing printed documents by holding jobs in the print queue until the user is authenticated, eliminating paper wastage and securing confidential information.

Data security kit available with ApeosPort devices provides administrators with three security options:

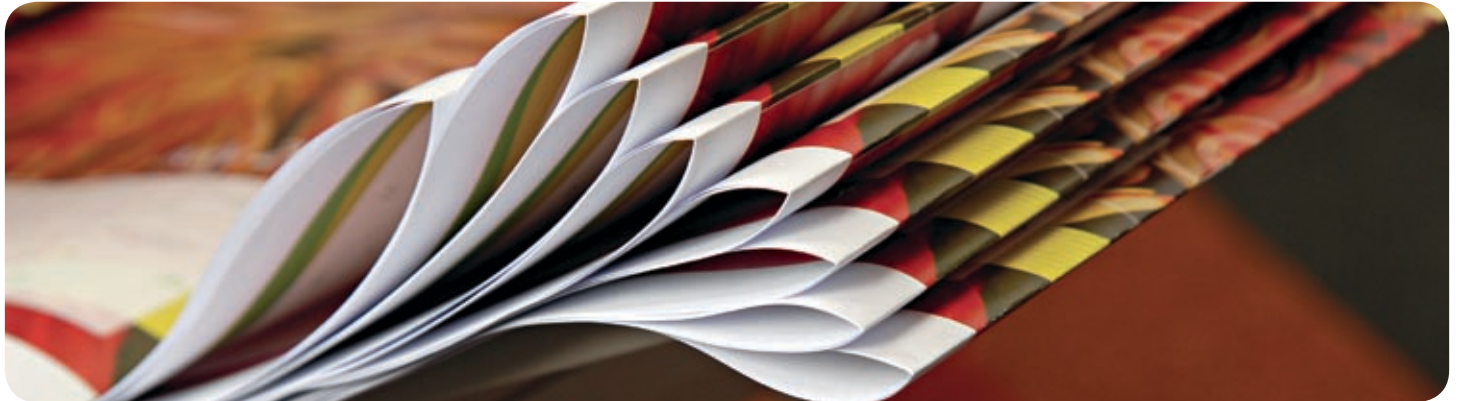
The optional Secure Watermark Kit

can help prevent the unauthorised reproduction of sensitive material. Documents featuring this secure watermark cannot be copied, scanned or faxed using similarly equipped devices.



Maximum manageability

Flexible, scalable tools and a high degree of control ensure that your ApeosPort devices are easy to deploy and maintain on your corporate network.



Remote fleet configuration. CentreWare Internet Services allows for simplified device configuration and administration, and lets you easily clone configurations to other similar devices on the network.

Manage colour printing to minimise costs. Control costs by nominating when colour could be used and by whom. This helps to ensure that colour is available to those individuals who truly leverage its power - such as the sales teams and marketing department.



Manage and track device usage using Xerox Standard Accounting. Device usage reports can be obtained and presented as a CSV file for greater cost control of printing, copying, scanning and faxing.

CentreWare Web management tool makes it easy for administrators to install, configure, manage, monitor and report on all SNMP compliant devices on your network, regardless of manufacturer.

Prevent losing your settings after a fatal system failure with the Setting Restore Tool. This tool will backup the settings stored on your hard drive and easily restore this settings¹.

¹ Settings can only be restored after changing the hard disk of the device.

1 Configure auditor

2 Upload email / fax address books as CSV files

3 Monitor paper tray / consumables status

4 Monitor job queues

5 Submit driverless print jobs

Fuji Xerox and environmental sustainability

Fuji Xerox technology and services are designed and managed to improve sustainability performance for its customers. Our equipment features environmentally responsible design and energy efficient enhancements.

Our document software and digital technologies help reduce paper wastage and our services enable clients to improve the efficiency of document intensive business processes and optimise their equipment infrastructure to save costs and cut carbon emissions.

Design for the environment. Every piece of Fuji Xerox equipment is designed with the environment in mind and our achievements include:

- Eliminating the need to use hazardous material such as lead-based solder;
- Enabling low energy consumption during use of the machine;
- Utilising innovative and energy efficient toner;
- Minimising the use of new resources; and
- Facilitating the remanufacture or recycling of used machines and parts at end of life

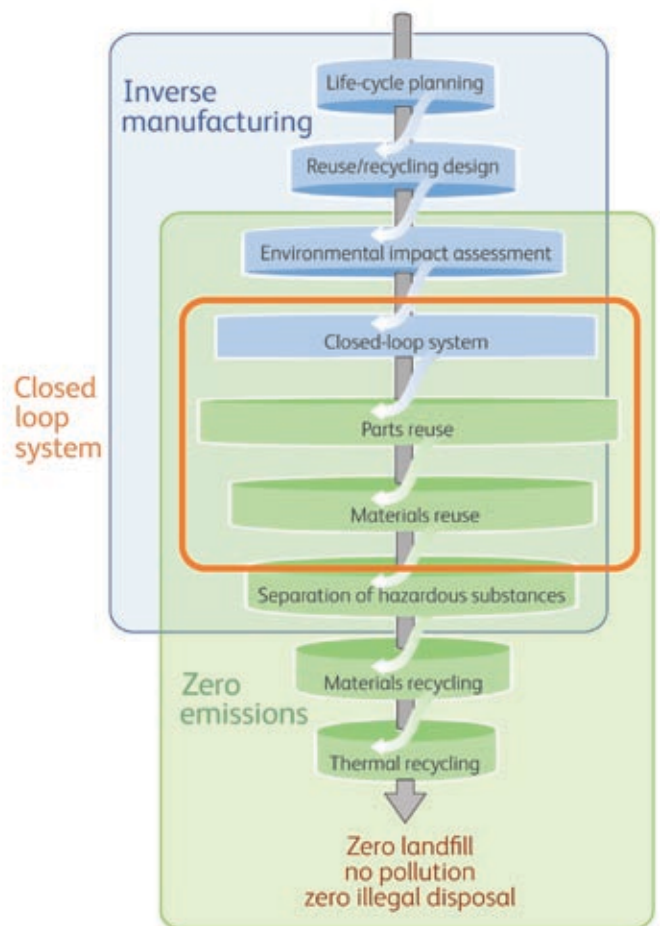
A leader in product stewardship. Fuji Xerox was first in the industry with products made from reused components and takes responsibility for all end-of-life products. We achieve over 99% resource recovery from the products returned to us at end of life.

Integrated Recycling System is based on three concepts:

- **Closed loop system** - we ensure used products are thoroughly and effectively used as resources;
- **Inverse manufacturing** - products are designed to minimise environmental impacts and maximise parts reuse; and
- **Zero emissions** - parts that cannot be reused are separated and recycled, and used as new materials again

Carbon calculator. Fuji Xerox Australia has developed a carbon calculator that estimates the energy consumed through the operation of an office document infrastructure. We can demonstrate how replacing and / or consolidating devices may reduce your carbon footprint while providing enhanced functionality and a platform for future innovation.

www.fujixerox.com.au/carbon_calculator



Extending your capabilities with Apeos Solutions

Image Gateway for Apeos 2.0 (IGA2.0) is a component based software platform for Fuji Xerox ApeosPort devices, providing integrated functionality for the multifunction device (MFD)¹. Capabilities including server based cost recovery, scanning, faxing and a two-way access point to document management systems using a customisable, full colour, high resolution interface at the device touch panel.

¹When considering IGA2.0, please ask Fuji Xerox for an overview of the integration and customisation that may be required.

ACCRU

- Single sign-on capability to all features (specifically features relevant to you) utilising existing access cards
- Identifying output costs to individual users
- Allocating total usage costs to departmental level
- Access and information security ideal for large WAN environment but remaining cost effective for smaller environments
- User Authentication provides access to various applications running on the IGA2.0 server
- Web based reporting

Fax communication

- Access the internal fax server module of IGA2.0 or connect to the external RightFax server (including support for FoIP)
- Desktop faxing capability
- Follow me faxing (available with ACCRU)



Scan to and print from EDMS

- Promote data integrity and compliance requirements for document storage and access
- Tight integration to supported EDMS systems with search capabilities providing process improvements and security
- Consolidation of document storage and retrieval
- Collaboration; create, share and review content
- Cost savings with the ability to preview and retrieve files in 400+ file formats through the user interface

Image and data capture

- Support for batch scanning (including blank page recognition)
- Extended output file formats and destinations such as Word, Excel and high compression PDF
- Minimise information leakage through MyFolder and MyEmail

Specifications of ApeosPort-III C7600 / C6500 / C5500 Series

Copy Function

	ApeosPort-III C7600	ApeosPort-III C6500	ApeosPort-III C5500
Type	Console type		
Memory	1,024 MB		
HDD	160 GB ¹		
Scanning Resolution	600 x 600 dpi		
Warm-up Time	95 sec or less (at room temperature 20°C)		
Original Paper Size	Max: A3 for both sheet and book originals		
Output Paper Size	Max: A3 (11 x 17") [For Bypass Tray: 13 x 19" (330 x 483 mm), 12.6 x 19.2" (320 x 488 mm)] Min: A5 [For Bypass Tray: Postcard (100 x 148 mm)]		
Output Paper Weight	Tray: 64 - 176 gsm, Bypass Tray: 64 - 280 gsm*		
First Copy Output Time	4.1 sec or less <BW> 6.6 sec or less <Colour>	4.1 sec or less <BW> 7.5 sec or less <Colour>	
Continuous Copy Speed	A4: 75 ppm <BW> A4: 60 ppm <Colour> A3: 37 ppm <BW> A3: 30 ppm <Colour>	65 ppm <BW> 50 ppm <Colour> 33 ppm <BW> 25 ppm <Colour>	55 ppm <BW> 50 ppm <Colour> 28 ppm <BW> 25 ppm <Colour>
Paper Tray Capacity	Standard: 500 sheets x 2Tray + 870 sheets + 1,140 sheets + Bypass Tray 250 sheets Optional: High Capacity Feeder: 2,000 sheets Max: 5,260 sheets [Standard + High Capacity Feeder]		
Output Tray Capacity	500 sheets (Simple Catch Tray)		
Power Supply	AC 220-240 V, 10 A, 50 / 60 Hz		
Power Consumption	Running: 1148 W, Standby: 235 W, Low Power: 148 W, Sleep Mode: 7 W		
Dimensions	Large-size Operational Panel (L): W 1,011 x D 781 x H 1,370 mm		
Machine Weight	Up to 252 kg		

¹Used space: 66 GB.

Print Function

	ApeosPort-III C7600	ApeosPort-III C6500	ApeosPort-III C5500
Type	Built-in type		
Print Resolution	2,400 x 2,400 dpi		
PDL	PCL6, PCL5, Adobe® PostScript® 3		
Operating System	PCL: Windows® 2000, Windows® XP, Windows® XPx64, Windows Server® 2003, Windows Server® 2003 x64, Windows Vista®, Windows Vista® x64, Windows Server® 2008, Windows Server® 2008 x64 PostScript: Windows® 2000, Windows® XP, Windows® XPx64, Windows Server® 2003, Windows Server® 2003 x64, Windows Vista®, Windows Vista® x64, Windows Server® 2008, Windows Server® 2008 x64, Mac OS X 10.3.9-10.4.11 (except 10.4.7), Mac OS X 10.5		
Connectivity	Standard: Ethernet 100BASE-TX / 10BASE-T, Optional: 1000BASE-T, USB2.0 ²		

²Supports Windows® 2000, Windows® XP, Windows Server® 2003, Windows Server 2008, MacOS 10.3.

Scan Function

	ApeosPort-III C7600	ApeosPort-III C6500	ApeosPort-III C5500
Type	Colour Scanner		
Scanning Speed	Black: 100 ppm, Colour: 50 ppm		
Scanning Resolution	600 x 600 dpi, 400 x 400 dpi, 300 x 300 dpi, 200 x 200 dpi		
Connectivity	Ethernet 100BASE-TX / 10BASE-T / 1000BASE-T (Option)		
Scan Destinations	Scan to Email, Folder, PC / Server (using FTP / SMB protocol)		

Fax Function (Optional)

	ApeosPort-III C7600	ApeosPort-III C6500	ApeosPort-III C5500
Send Document Size	Max: A3, 11 x 17"		
Transmission Time	Less than 3 seconds		
Transmission Mode	G3		
No. of Fax Lines	1 line or 3 lines (Max.)		

Duplex Automatic Document Feeder

	ApeosPort-III C7600	ApeosPort-III C6500	ApeosPort-III C5500
Capacity	250 sheets		
Original Paper Size	Max: A3, Min: A5		
Output Paper Weight	38 - 200 gsm (Duplex: 50 - 128gsm)		

Protecting the environment is a fundamental component of our company's commitment to corporate citizenship. At Fuji Xerox Australia, we supply products that have been designed with both our customers and the environment in mind. As a world leader in the development of parts and components Remanufacturing Programs, we have made Eco Manufacturing an integral part of our business. All our sites have achieved ISO 14001:2004 Environmental Management System Certification, as a demonstration of our commitment to protecting the environment.

Descriptions in this material, product specifications and / or appearances are subject to change without prior notice due to improvements. Please note that the product colour appears differently from the actual colour as a result of properties of papers or printing ink. Windows and Windows NT are registered trademarks of Microsoft Corporation. Macintosh, Mac OS and Ether Talk are trademarks of Apple Computer, Inc. PostScript is a registered trademark of Adobe Systems Incorporated in each country.

Spare parts for the standard configuration of installed machines are supported for up to 7 years from the date of the end of machine production.

For more information or detailed product specifications, call or visit us at

Fuji Xerox Australia 101 Waterloo Road,
Macquarie Park NSW 2113
Tel. (02) 9856 5000 Fax. (02) 9856 5003

www.fujixerox.com.au

C-Finisher with Booklet Maker (Optional)³

	ApeosPort-III C7600	ApeosPort-III C6500	ApeosPort-III C5500
Paper Size / Paper Weight	Exit Tray: Max. 13 x 19", 12.6 x 19.2" (320 x 488 mm), Min. (100 x 148 mm), 64 - 280 gsm Finisher Tray: Max. 13 x 19", 12.6 x 19.2" (320 x 488 mm), Min. B5 LEF, 64 - 176 gsm Booklet Tray: Max. 13 x 18", Min. A4, Letter (8.5 x 11"), 64 - 90 gsm*		
Stacker Capacity	Exit Tray: 500 sheets (A4) Finisher Tray: up to 1,500 sheets or 200 stapled sets Booklet Tray: 20 copies		
Staple			
Capacity	50 sheets (Max 90 gsm)		
Paper Size	Max: A3, 11 x 17", Min: B5 LEF		
Position	1 position (Front, Rear / Corner), 2 positions (Parallel)		
Punch			
Paper Size / Paper Weight	A3, 11 x 17", B4, A4, Letter (8.5 x 11"), B5 LEF, 64 - 176 gsm		
Number of Holes	2 / 4 holes (Option US 2 / 3 holes)		
Booklet Finishing			
Capacity	Booklet: 15 sheets, Bi-Fold: 5 sheets		
Paper Size	Max: 13 x 18", Min: A4, Letter (8.5 x 11")		
Paper Weight	Booklet: 64 - 90 gsm, Bi-Fold: 64 - 105 gsm		

³Non Booklet Maker C-Finisher is available with stacker capacity A4 up to 3,000 sheets.

D-Finisher with Booklet Maker (Optional)

	ApeosPort-III C7600	ApeosPort-III C6500	ApeosPort-III C5500
Paper Size / Paper Weight	Exit Tray: Max. 13 x 19", 12.6 x 19.2" (320 x 488 mm), Min. Postcard (100 x 148 mm), 64 - 280 gsm Finisher Tray: Max. 13 x 19", 12.6 x 19.2" (320 x 488 mm), Min. B5 LEF, 64 - 280 gsm Booklet Tray: Max. 13 x 18", Min. A4, Letter (8.5 x 11"), 64 - 90 gsm*		
Stacker Capacity	Exit Tray: 500 sheets (A4) Finisher Tray: Up to 2,000 sheets or 200 stapled sets Booklet Tray: 20 sets		
Staple			
Capacity	100 sheets (64 - 90 gsm)		
Paper Size	Max: A3, 11 x 17" Min: B5 LEF		
Position	Single (Front / Corner, Center / Parallel, Back / Parallel, Corner), Dual (Parallel)		
Punch			
Paper Size / Paper Weight	A3, 11 x 17", B4, A4, Letter (8.5 x 11"), B5 LEF, 64 - 176 gsm		
Number of Holes	2 / 4 holes		
Booklet Finishing			
Capacity	Booklet: 15 sheets, Bi-Fold: 5 sheets		
Paper Size	Max: 13 x 18", Min: A4, Letter (8.5 x 11")		
Paper Weight	Booklet: 64 - 90 gsm, Bi-Fold: 64 to 105 gsm		
Folding			
Z-Fold	Paper size: A3, 11 x 17", B4, Paper Weight: 64 - 90 gsm		
Tri-Fold	Paper size: A4, Letter (8.5 x 11"), Paper Weight: 64 - 90 gsm		
Interposer			
Capacity	200 sheets		
Paper Size	Max: A3, 11 x 17" Min: B5 LEF		
Paper Weight	64 - 220 gsm		

High Capacity Feeder (Optional)

	ApeosPort-III C7600	ApeosPort-III C6500	ApeosPort-III C5500
Paper Size / Paper Weight	A4 LEF, Letter (8.5 x 11") LEF, B5 LEF, 64 - 176 gsm		
Capacity	2,000 sheets		

³Performance may vary when using coated, heavyweight or special stock.

Customer Expectation Document (CED)

For detailed product specifications, optimum performance parameters and service clearances refer to the Customer Expectation Document.



Reproduction Prohibitions. Please note that the reproduction of the following is prohibited by law: domestic and overseas bank notes, government-issued securities, national bonds and local bond certificates; unused postage stamps and some post cards; certificate stamps; and copyright material (literary works, musical works, paintings, engravings, maps, cinematographic works, photographic works etc) except where and to the extent that the local law provides otherwise. This product is equipped with anti-counterfeit feature. This feature is not intended to prevent illegal reproduction.



For Your Safe Use

Before using the product, read the Instruction Manual carefully for proper use.
Use the product with an appropriate adequate power source and voltage displayed. Be sure to establish a ground.
In the case of a failure or short circuit, an electric shock may result.

FUJI XEROX